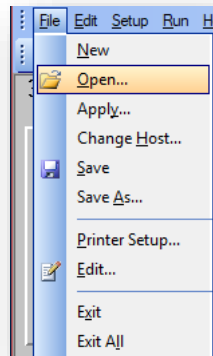


Connecting to LSH Pentana Server

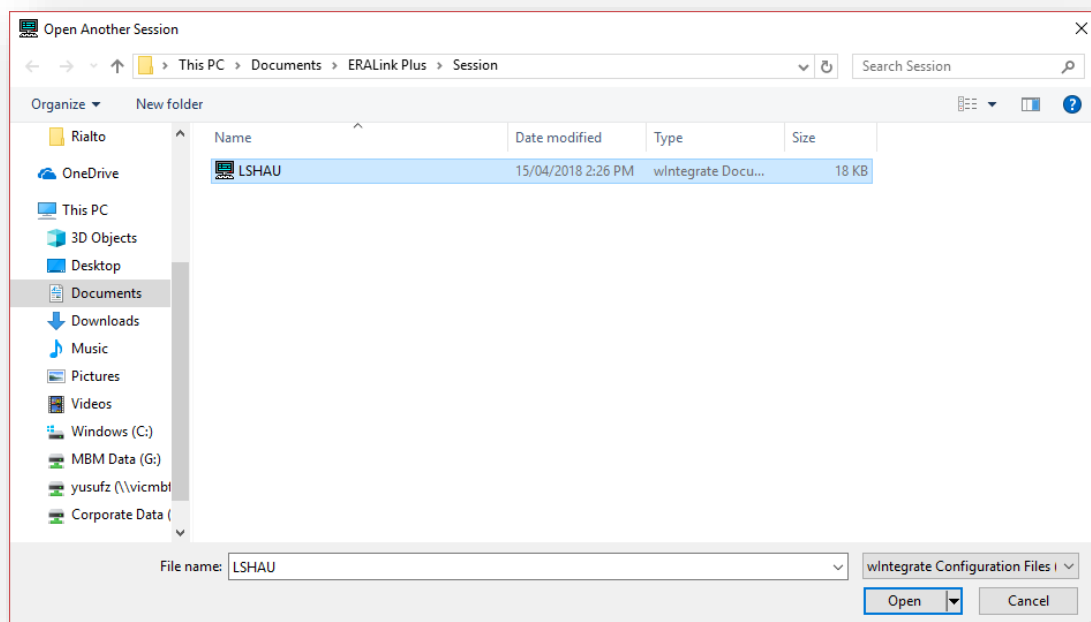
In order to connect to the LSH Pentana ERA server you would need to open the session file using Method 1 or alternatively use Method 2 of this document.

Method One

Open ERALink Plus > Click on File > Open



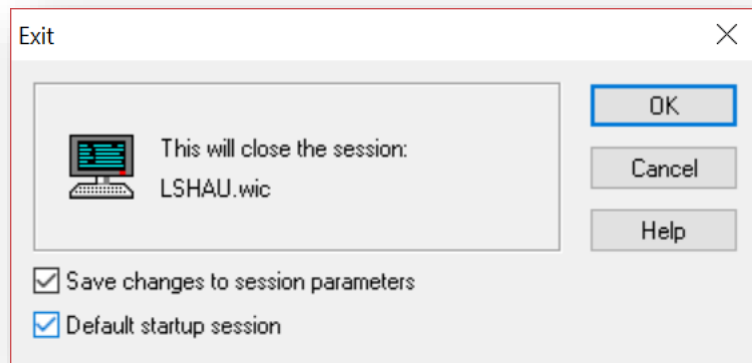
Click on LSHAU > Click Open



Then hit the Enter key on the Numpad or the toggle button in ERA to connect



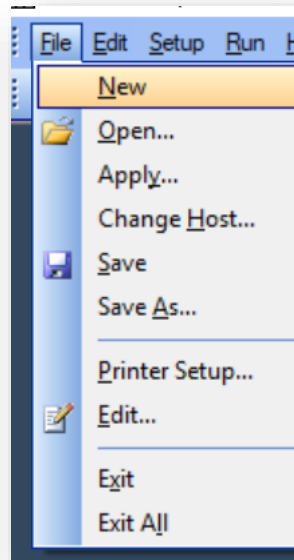
When you close ERA, ensure that you click on 'Save changes to session parameters' and 'Default start up session' > Click OK



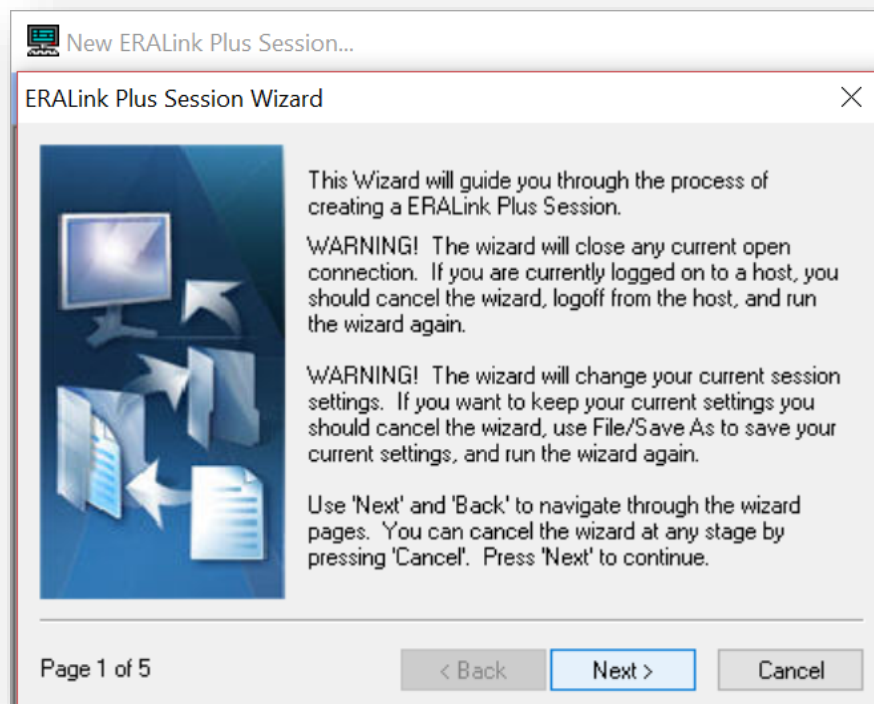
Method 2

In the event that Method 1 doesn't work due to not logging off or correct policies applying to your computer.

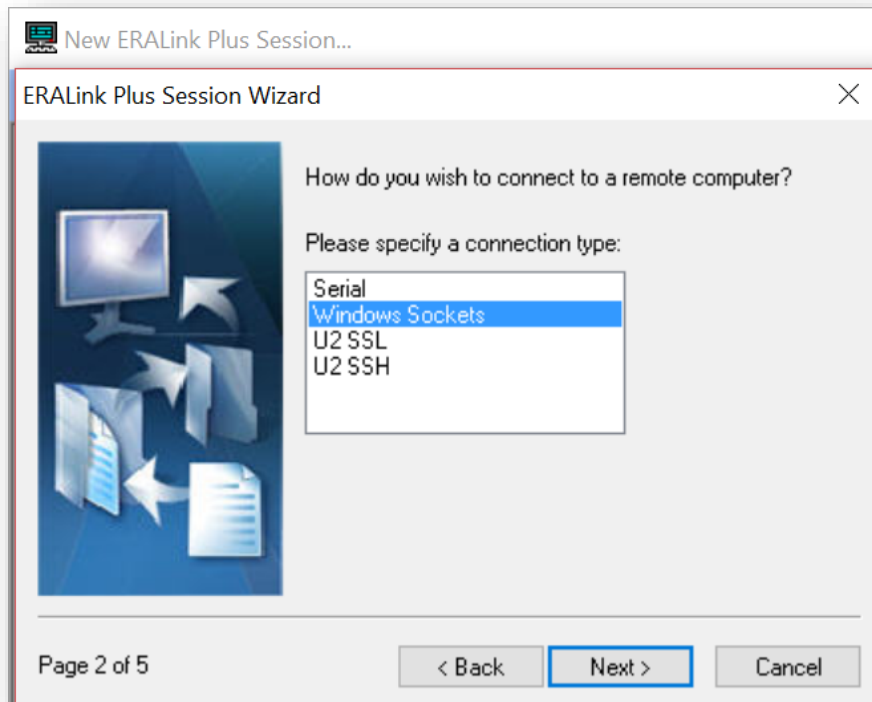
Open ERALink > Click on File > New



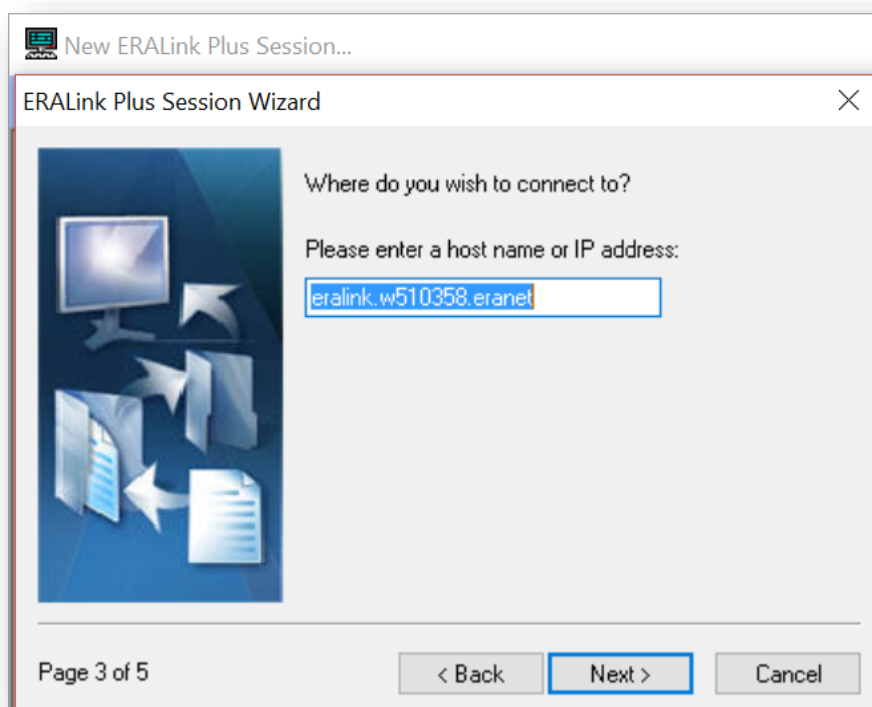
Click Next



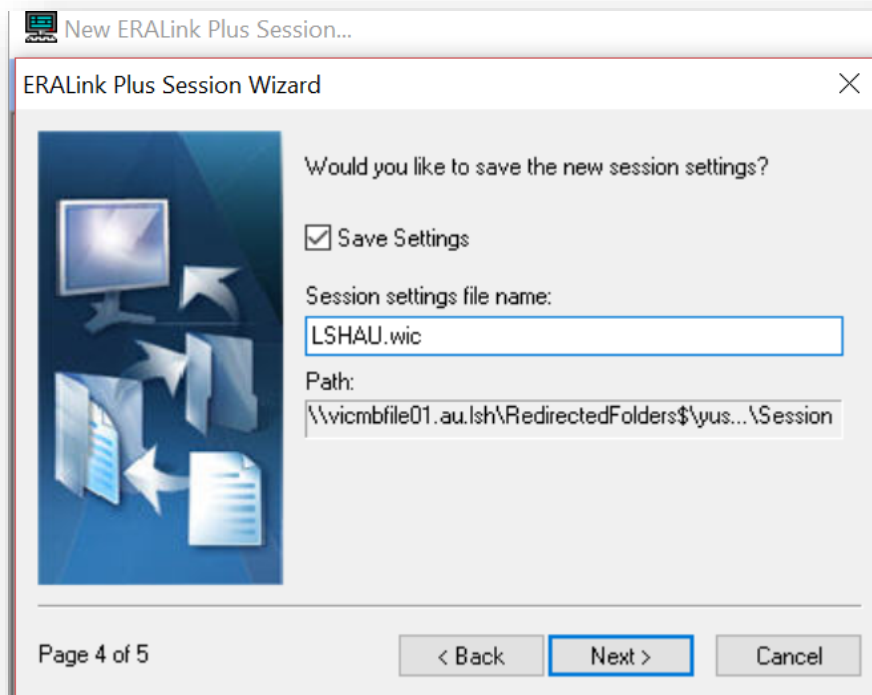
Choose Windows Sockets > Click Next



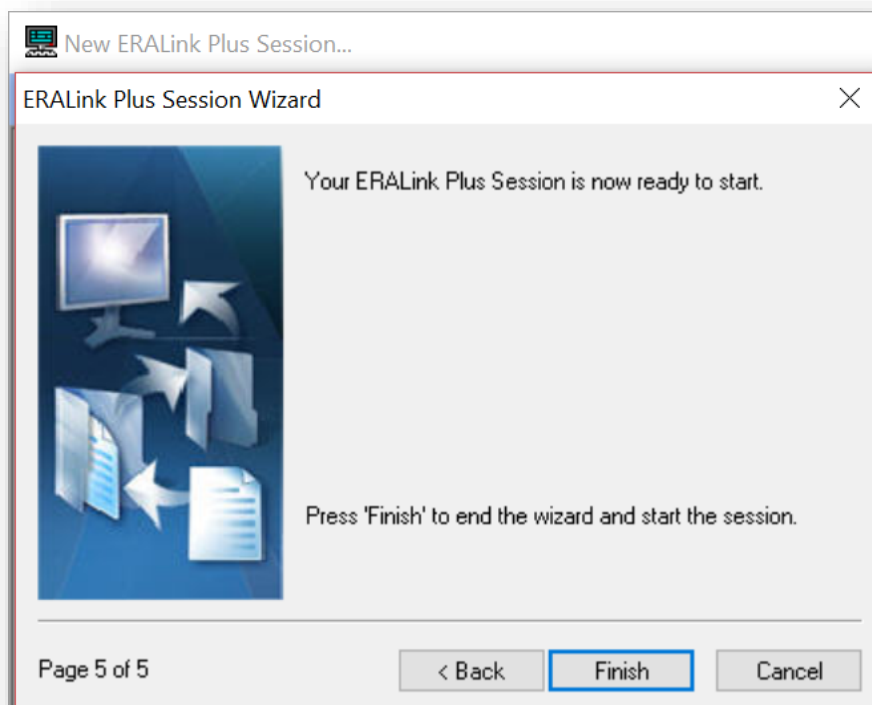
Type in eralink.w510358.ernet > Click Next



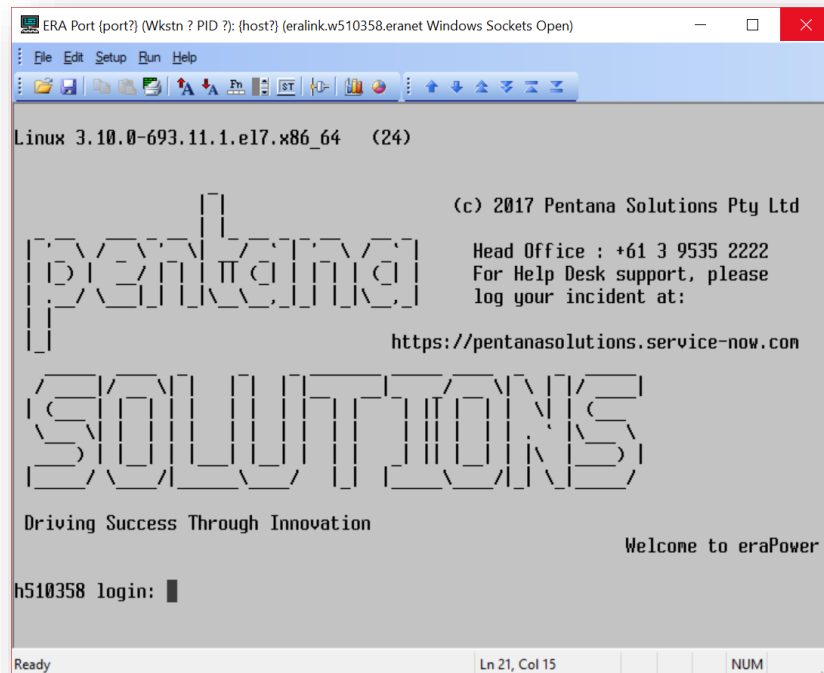
Give it the name LSHAU.wic as per below > Click Next



Click Finish



You will see the login screen as per below



Hit the “X” to close the session. Please ensure that you click on ‘Save changes to session parameters’ and ‘Default startup session’ > Click OK

