

LSH VPN Connectivity

This document will cover how to connect to the LSH VPN in order to work from home.

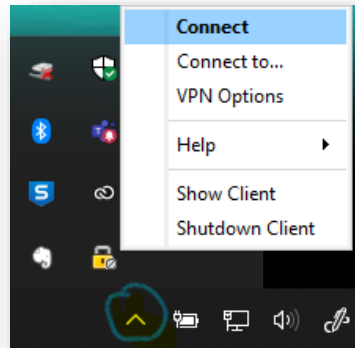
Not all staff have access to VPN in order to work from home. If you require access to work from home please submit a ticket to helpdesk@lshauto.com.au with approval from your direct manager and dealer principal.

Contents

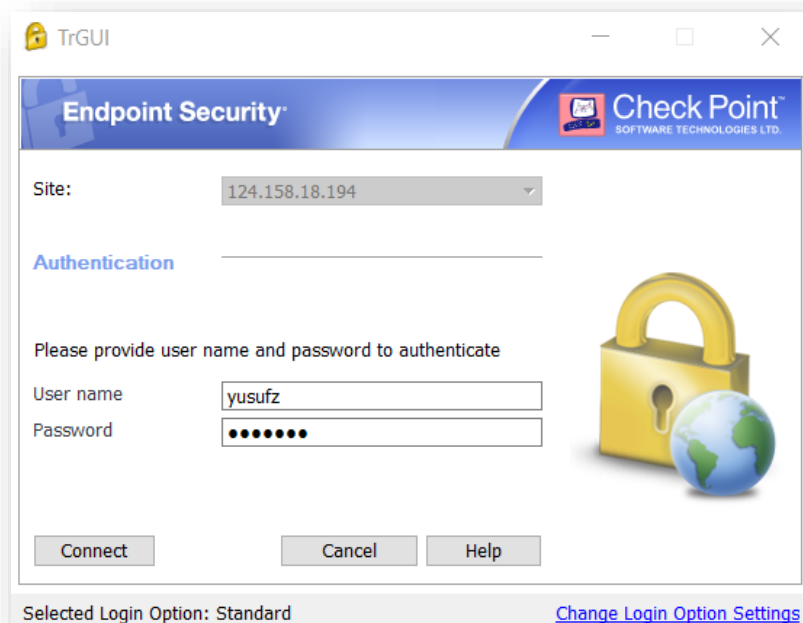
LSH VPN Connectivity.....	1
Connecting VPN.....	2
Setting up VPN	4

Connecting VPN

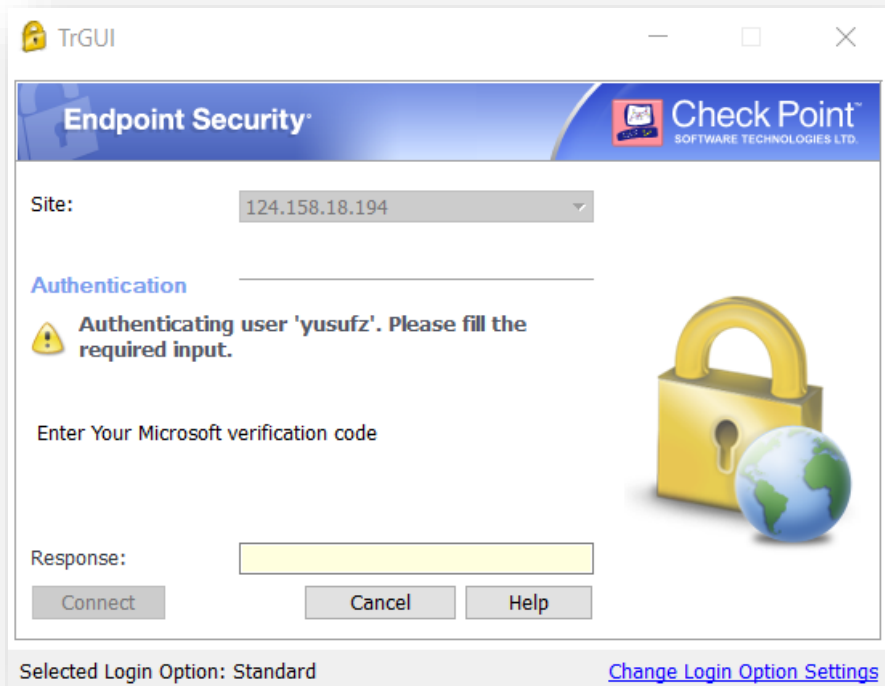
The Checkpoint VPN Software is generally running in the background. You should be able to find it by clicking on the Arrow > look for the Padlock > Right click the padlock > click on Connect



Enter your Username and Password. Note: This is the same as your computer. (All Victorian and users post July 2019 the same as your eraPower credentials)



Enter the code that is sent to you via the Authenticator App/Text/Call.




TrGUI

Endpoint Security

Check Point
SOFTWARE TECHNOLOGIES LTD.

Site: 124.158.18.194

Authentication

 Authenticating user 'yusufz'. Please fill the required input.

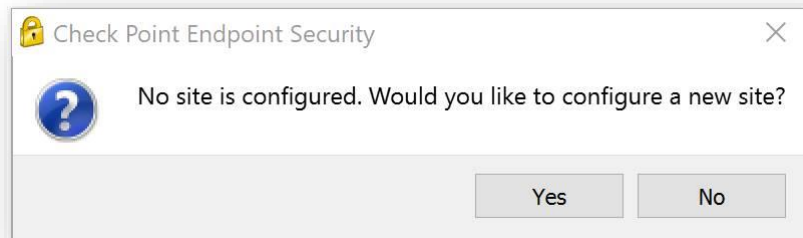
Enter Your Microsoft verification code

Response:

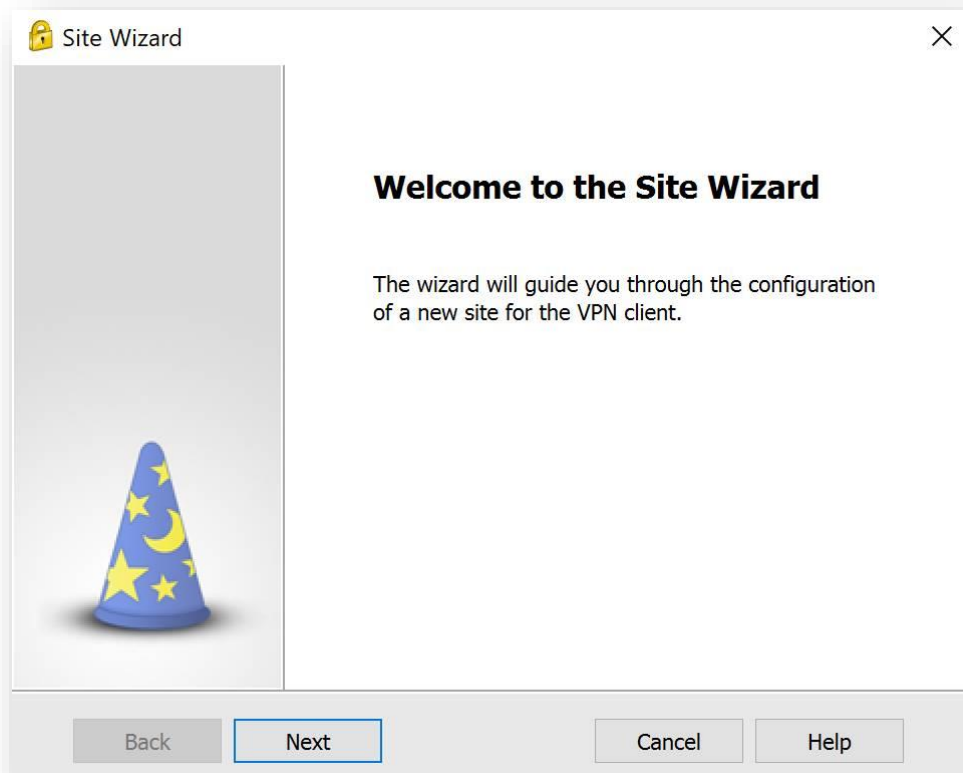
Selected Login Option: Standard [Change Login Option Settings](#)

Setting up VPN

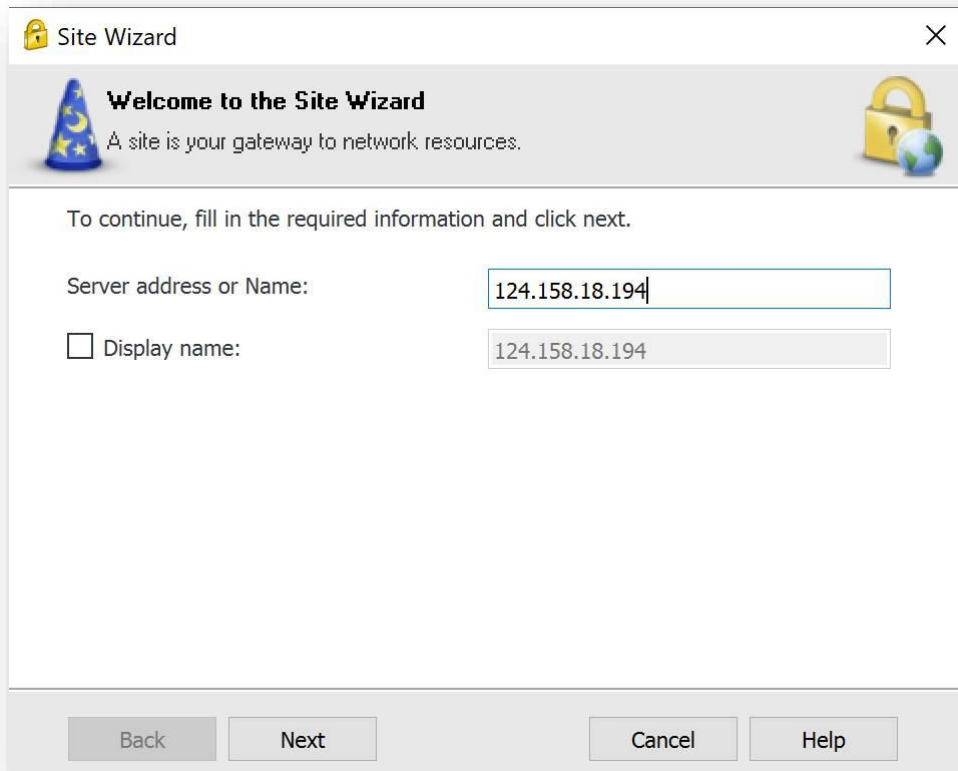
If you get the below message it means that the VPN software hasn't been configured on your device. Please click on Yes to proceed.



Click on Next

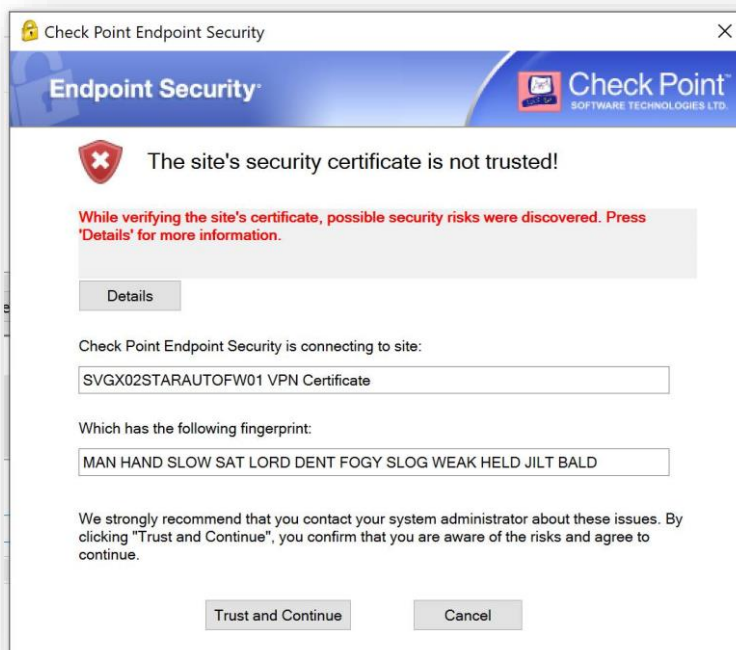


In the server address or name field type: 124.158.18.194 and click Next



The Site Wizard dialog box is titled "Site Wizard" and features a wizard hat icon on the left and a padlock icon on the right. The main heading is "Welcome to the Site Wizard" with the subtitle "A site is your gateway to network resources." Below this, a message states: "To continue, fill in the required information and click next." There are two input fields: "Server address or Name:" with the value "124.158.18.194" and "Display name:" with the value "124.158.18.194". The "Display name" field is preceded by an unchecked checkbox. At the bottom, there are four buttons: "Back", "Next", "Cancel", and "Help".

Click on Trust and Continue



The Check Point Endpoint Security dialog box displays a security warning. The title bar reads "Check Point Endpoint Security". The main heading is "Endpoint Security" with the Check Point logo. A red shield icon with a white 'X' is next to the text "The site's security certificate is not trusted!". Below this, a red warning message states: "While verifying the site's certificate, possible security risks were discovered. Press 'Details' for more information." A "Details" button is provided. The text "Check Point Endpoint Security is connecting to site:" is followed by a text box containing "SVGX02STARAUTOFW01 VPN Certificate". Below this, the text "Which has the following fingerprint:" is followed by a text box containing "MAN HAND SLOW SAT LORD DENT FOGY SLOG WEAK HELD JILT BALD". A disclaimer at the bottom states: "We strongly recommend that you contact your system administrator about these issues. By clicking 'Trust and Continue', you confirm that you are aware of the risks and agree to continue." At the bottom, there are two buttons: "Trust and Continue" and "Cancel".

Click on Finish

